



Comisiwn Ffiniau
i Gymru

Boundary Commission
for Wales

Boundary Commission
for Wales

Partner Pack

Revised Proposals
2023 Review



Mae'r ddogfen yma hefyd ar gael yn y Gymraeg.
The Commission welcomes correspondence and
telephone calls in Welsh or English.

© Crown copyright 2022 – You may re-use this information (excluding logos) free of charge in any format or medium, under the terms of the Open Government Licence. To view this licence, visit <http://www.nationalarchives.gov.uk/doc/open-government-licence> or email: psi@nationalarchives.gov.uk
Where we have identified any third-party copyright information, you will need to obtain permission from the copyright holders concerned.

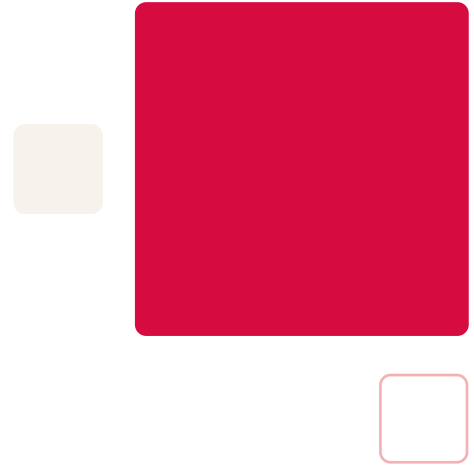
Any enquiries regarding this publication should be sent to us at bcw@boundaries.wales

This document is also available from our website at www.bcomm-wales.gov.uk

Contents

Chapter 1	Introduction	04
Chapter 2	Summary of the Review	06
Chapter 3	Key Messages	08
Chapter 4	How to get involved	10
Chapter 5	Resources: Social Media	12
Chapter 6	Resources: Website & Print	13
Chapter 7	Resources: Press & Media	14
Chapter 8	Review Flowchart	18
Chapter 9	Frequently Asked Questions	19

Introduction



Dear partner,

We'd like to thank you for the support you have shown the Commission as we undertake the 2023 Review of parliamentary constituencies in Wales.

The Commission has now published its Revised Proposals and opened the final consultation of the Review.

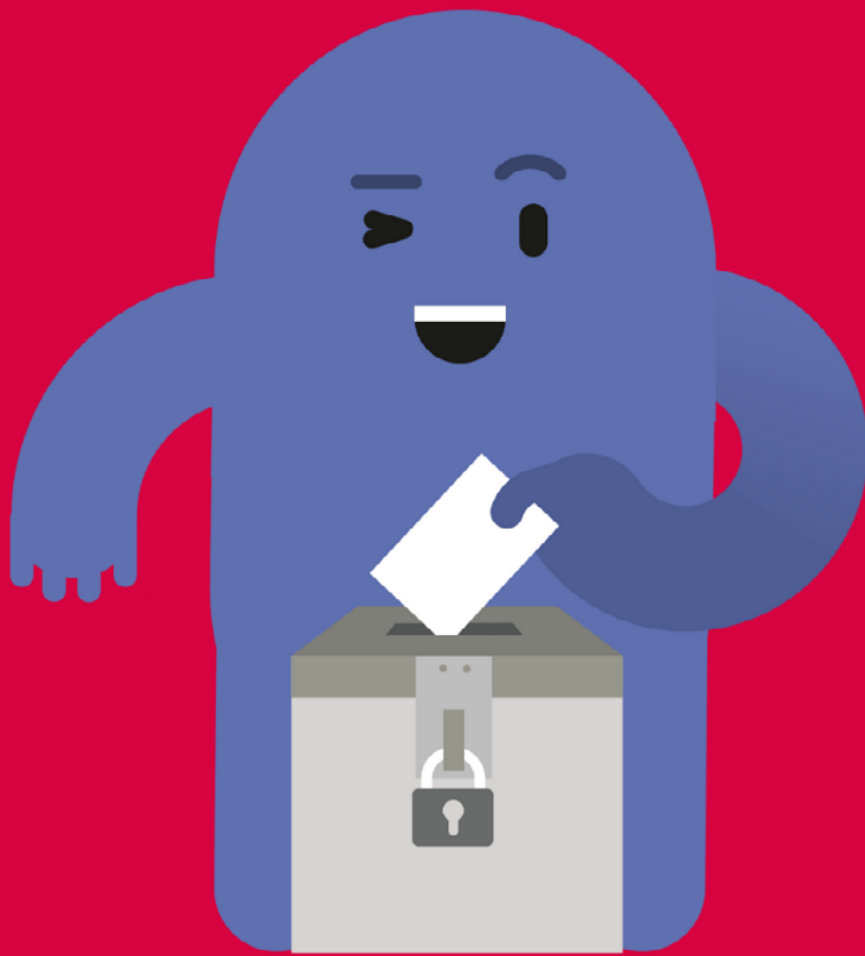
This pack gives some advice not only on how you can make your voice heard during this consultation period, but how you can amplify your voice and that of your community by spreading the word about the review.

We have some resources which you can download and use yourself, and we're looking forward immensely to seeing communities across Wales responding to our Revised proposals thanks to the efforts of people like you in getting the word out.

If you're reading this pack in an official capacity, we also have some resources which could be of benefit to your office or organisation, such as template press releases and social media graphics.

If you have any questions for us, please get in touch at enquiries@boundaries.wales.

Most importantly of all, please let us know your thoughts on the Revised proposals by responding to our consultation at www.bcw-reviews.org.uk.



Summary of the Review

The 2023 Review of Parliamentary Constituencies is conducted in accordance with the Parliamentary Constituencies Act 1986 (as amended).

The Rules of the Act set out the number of constituencies to be provided for Wales for the 2024 Westminster Parliamentary Election. It also sets out that all constituencies should have an electorate within $\pm 5\%$ of the UK average or quota.

Under the legislation the Commission will be required to base its recommendations on the number of electors whose names appear on the register of parliamentary electors published by the Office for National Statistics on 5 January 2021.

For the purposes of the 2023 Review, the total UK electorate to be used by the four UK Boundary Commissions is 47,558,398 and after applying the formula specified in the Act, the allocation of constituencies to each part of the UK is:

Country	Electorate	Current allocation	New allocation
England*	39,860,421	533	543
Northern Ireland	1,295,688	18	18
Scotland**	4,079,612	59	57
Wales***	2,322,677	40	32
Total	47,558,398	650	650

* The electorate for England does not contain the electorate of the Isle of Wight. This area is permitted to create constituencies with an electorate that is more than 5% outside the UK electoral quota. The number of constituencies allocated to England includes the additional constituencies for the Isle of Wight.

** The electorate for Scotland does not contain the electorate of the two preserved constituencies which are a) Orkney and Shetland and b) Na h-Eileanan an Iar. These constituencies are permitted to have an electorate that is more than 5% outside the UK electoral quota. The number of constituencies allocated to Scotland includes the additional constituencies of Orkney and Shetland, and Na h-Eileanan an Iar.

*** The electorate for Wales does not contain the electorate of the Isle of Anglesey. This area is permitted to create a constituency with an electorate that is more than 5% outside the UK electoral quota. The number of constituencies allocated to Wales includes the additional constituency for the Isle of Anglesey.

The UK electoral quota is to the nearest whole number is 73,393. Each proposed constituency must therefore have an electorate that is between 69,724 and 77,062.

Revised Proposals for the Parliamentary constituencies in Wales were published on 19 October 2022 with a period of consultation now open until 15 November 2022.

Information on how to get involved in the consultation is contained within this pack.



Key messages

“The last chance to have your say”

This consultation period is the final opportunity for people to share their views during this Review.

The Commission’s Final Recommendations will take effect automatically from the next General Election, so don’t miss your chance to shape the new map of Welsh constituencies.

“Your views matter”

While we present our Revised proposals for a new map of Welsh constituencies, nobody will understand your local area better than you.

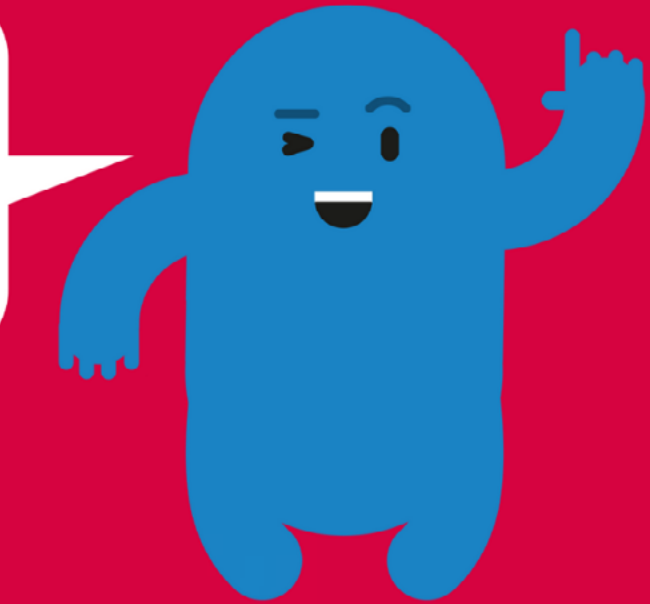
We want to hear your views on our Revised proposals and how they can be improved, not only because we want you to take ownership over the process, but because you have the expertise we need to develop the best possible proposals.

“We want to listen to you”

We may not have revised our proposals in the exact way you would have wished, or perhaps you didn’t share your views during previous consultations.

Whatever may have happened up to this point in the Review, the principle remains unchanged: we want to listen to you.

Our proposals could change again following this consultation, so continue to share your views.



How to get involved

Send a representation

This is the most important, and most impactful thing you can do.

You can send us a representation (rep) by:

- Visiting bcw-reviews.org.uk
- Emailing bcw@boundaries.wales
- Writing to Boundary Commission for Wales, Hastings House, Cardiff, CF24 0BL

Share content on social media

We've got plenty of social media resources for you to share in this pack, with both a national and local focus (and all available bilingually).

Spreading the word about our Revised proposals and consultation period on social media is a great way to raise awareness and to ensure that your friends, family, colleagues, or constituents have the opportunity to have their views heard.

Tell your friends and family

Do you have a strong view on the Revised proposals? Encourage your friends and family to examine the map and send in their own rep.

Share it with your colleagues

Why not start a discussion about the proposals in your office and encourage your colleagues to send in their views?

Write a letter to your local newspaper

Writing to your local newspaper could be a great way of encouraging people who share your view on

our proposals to send in their own rep. It could also be a great way of convincing others of your view. We have a template letter in this pack which you can amend and send to your own local (or national) newspaper.

Representing an organisation? Use our press release template

Encourage your members, constituents, or supporters to have their say by amending our press release template. You could encourage people in your local area, or nationally to have their say in our consultation by amending the press release for your purposes.

You could also write an opinion piece or discuss the Revised proposals in your newspaper column.

Start a campaign

Your rep doesn't have to be an individual one. If you have a strong view on our proposals you could also start a letter-writing campaign or launch a petition. You could even set up a street stall or go door-to-door to collect signatures.

Use Boundary Assistant

We don't just want you to send a rep, we want you to send the best rep you can. The reps which are most likely to impact our proposals going forward are those which present workable counter-proposals.

To help you make sense of the map, and to check that the numbers add up, you can use the very useful open-source tool, <https://boundaryassistant.org/>.

You are also welcome to download your created map from Boundary Assistant and send it to us to support your rep. (Save it as a zip file to upload it to the portal, or alternatively send it by email).

Please note however that as a third-party tool, we cannot guarantee its accuracy.

Resources: Social Media

Suggested message

“Wales’ parliamentary constituencies are changing and the final consultation is now open. Have your say on the @BCommWales proposals by visiting bcw-reviews.org.uk”

Graphics

By clicking the link below you can find a wide selection of graphics which you can use to promote the consultation period. There’s a variety of local and national images available, and they’re all available in Welsh and English. Please feel free to use these on social media.

[Click here to view the images.](#)

Resources: Websites & Print

Short post

Please use the following post on your website homepage to encourage people to respond to the consultation.

“The Boundary Commission for Wales has published its Revised proposals for Wales’ new parliamentary constituencies. Take part in the final consultation before 15 November. Visit bcw-reviews.org.uk to see the proposals and make your comments on them.”

Newsletter article

Have your say on proposed boundary changes

The Boundary Commission for Wales has published its Revised proposals, and the final consultation period of the Review of parliamentary constituencies is now open.

The consultation on the latest set of proposals closes on 15 November 2022. You can have your say on the proposals both locally, and nationally. Send in your views whether you support or oppose the proposals.

You can send your views on the proposals via the Commission’s consultation portal. The portal can be accessed at bcw-reviews.org.

The proposals can also be seen at bcomm-wales.gov.uk, or at a number of local “places of deposit” which are listed on the Commission’s website.

You can also send your views via email to bcw@boundaries.wales or by post to Boundary Commission for Wales, Ground Floor, Hastings House, Cardiff, CF24 0BL.

Resources: Press & Letters

Press Release Template

Please note that this is a template press release. Text in red is placeholder text and should be adapted to be relevant to you. Please feel free to amend the suggested quote to align with what you/your organisation wish to say. This template is also available in Welsh.

PRESS RELEASE – FOR IMMEDIATE RELEASE

Call for people in **Community Name to have their say on proposed boundary changes**

Boundary Commission for Wales opens final consultation on new constituency map

People in **community name** are being urged to respond to the Boundary Commission for Wales' consultation on its proposed new map of Wales' parliamentary constituencies.

The Commission has published its Revised proposals, with changes made to the constituencies which were originally proposed in September 2021.

The consultation is now open and will close on 15 November 2022. Residents can have their say on the proposals both locally, and nationally and are encouraged to send in their views whether they support or oppose the proposals.

The Boundary Commission for Wales has established an online consultation portal where residents can view the proposals and make comments on specific elements of them. The portal can be accessed at bcw-reviews.org.uk

The proposals can also be seen at bcomm-wales.gov.uk, or at a number of local "places of deposit" which are listed on the Commission's website.

Those who would prefer to respond to the consultation via means other than the consultation portal can send in their views via email to bcw@boundaries.wales or by post to Boundary Commission for Wales, Ground Floor, Hastings House, Cardiff, CF24 0BL.

Urging residents to respond to the consultation, [Name of Person](#) said, “[These Revised proposals from the Boundary Commission for Wales suggest significant changes for constituencies across Wales.](#)

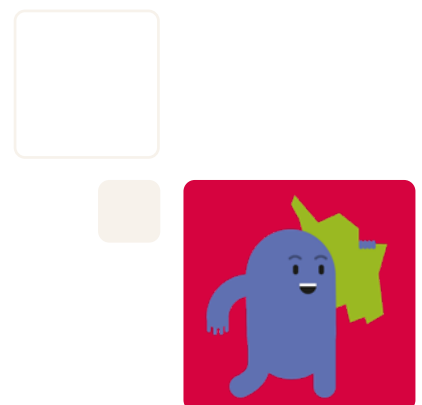
“[This consultation is the public’s final opportunity to impact the new map of Welsh constituencies.](#)

“[I would urge everyone to take a look at the proposals and have your say before 15 November.](#)”

Each constituency proposed by the Commission must contain between 69,724 and 77,062 electors.

The Commission will consider all representations received within the consultation period but have stressed that representations are strengthened where they propose workable alternatives with regards to neighbouring constituencies.

ENDS



Letter Template

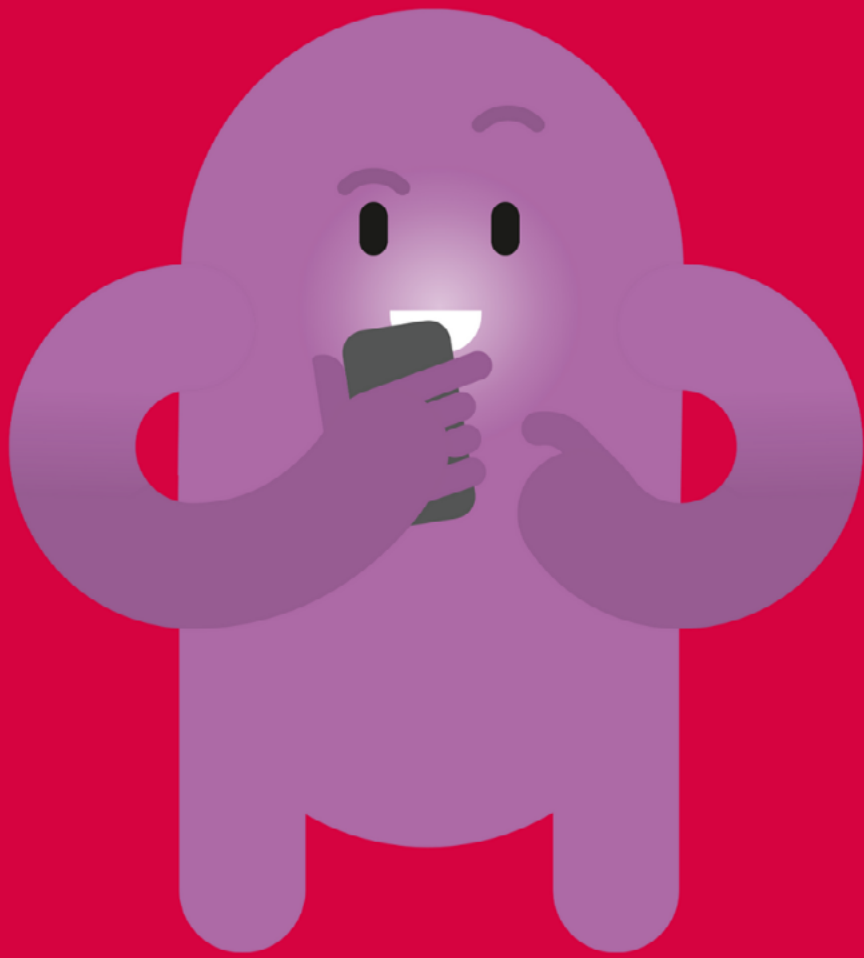
Please note that this is a template letter. Please feel free to amend the letter as much as you choose to align with what you wish to say. This template is also available in Welsh.

Dear editor,

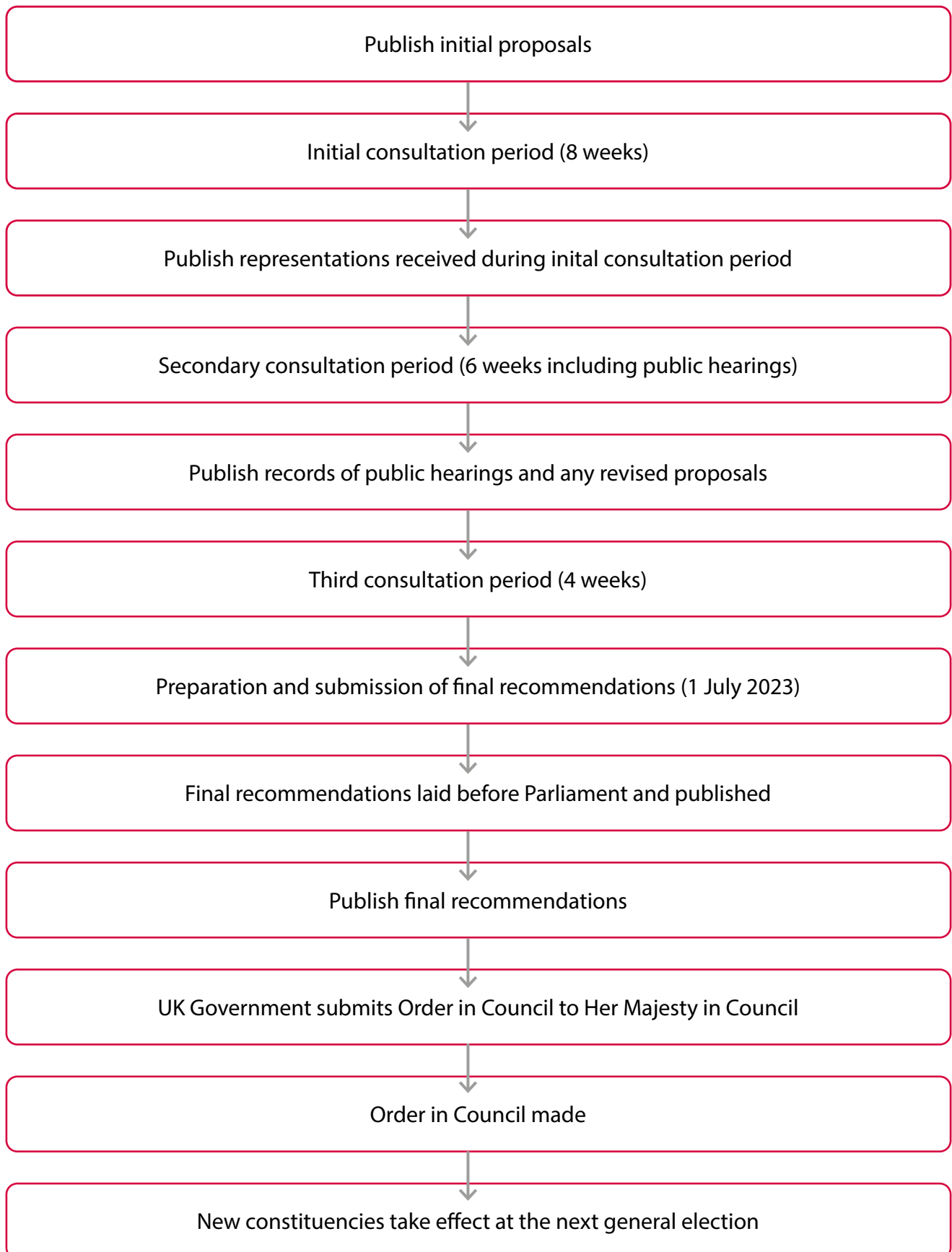
The Boundary Commission for Wales has published its Revised proposals for Wales' new parliamentary constituencies. These proposals suggest significant changes across Wales as the country faces a reduction in MPs from the current 40 to 32.

I would encourage everyone with a strong view on these proposals to have their say during the current consultation period which closes on 15 November.

Such significant change demands significant public engagement and should someone have a strong view on these proposals either in support or in opposition to them, they should make the Commission aware of that as soon as possible by visiting bcw-reviews.org.uk, emailing bcw@boundaries.wales, or writing to Boundary Commission for Wales, Hastings House, Cardiff, CF24 0BL.



Review Process Flow Chart



FAQs

Why are you conducting a review of Parliamentary constituencies?

We are responsible for reviewing Parliamentary constituency boundaries in Wales on the basis of rules laid down by Parliament. We are currently required to submit a formal report by 1 July 2023 on the basis of rules set out in the Parliamentary Constituencies Act 1986 (as amended by the Parliamentary Constituencies Act 2020).

Why the reduction in the number of Members of Parliament representing Wales?

The Act states that there is to be a fixed number of 650 constituencies for the whole of the UK. The Act also provides a mathematical formula to determine how many constituencies should be allocated to each of the four parts of the UK (Wales, England, Scotland and Northern Ireland).

In accordance with that formula, the number of constituencies allocated to Wales under the Act is 32. Welsh constituencies must be wholly within Wales, and cannot include areas of another part of the UK.

How did the average constituency figure arise? What criteria did you use?

The Act sets out the rules for the Commission to follow in conducting a review of Parliamentary constituency boundaries. The Commission did not make these decisions themselves. The figure for the number of constituencies in Wales was arrived at by the application of a formula prescribed in the legislation. See our Guide to the 2023 Review for more detail.

Why is Ynys Môn an exception to the electoral quota?

There are five exemptions from 'Rule 2' of The Act, which sets the parameters for constituency sizes across the UK. These are two constituencies on the Isle of Wight in England, Orkney and Shetland and Na h-Eileanan an Iar in Scotland, and the Isle of Anglesey in Wales.

What is the Commission / what is the Commission's function?

The Boundary Commission for Wales is an independent and impartial non-departmental public body which is responsible for conducting reviews of Parliamentary constituency boundaries in Wales and making recommendations to Parliament for changes.

Who are the Commissioners?

The Commissioners were selected through open public competition.

- Deputy Chair: Mrs Justice Jefford DBE
- Commission Members: Mr Huw Vaughan Thomas CBE and Mr Sam A Hartley

The Deputy Chair, who presides over the Commission's meetings, is a judge of the High Court appointed by the Lord Chancellor. The two other members are appointed jointly by The Chancellor of the Duchy of Lancaster and Minister for the Cabinet Office.

How will Parliamentary constituencies be updated to reflect changing numbers of electors in different areas?

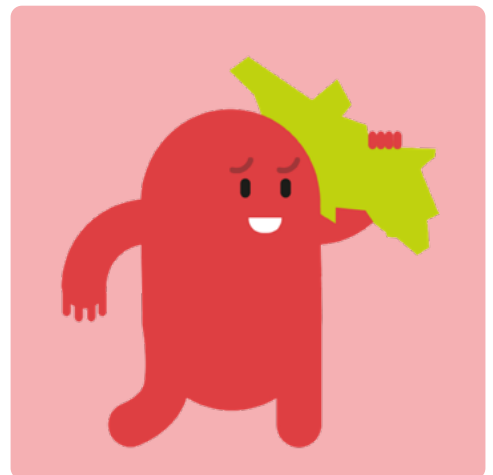
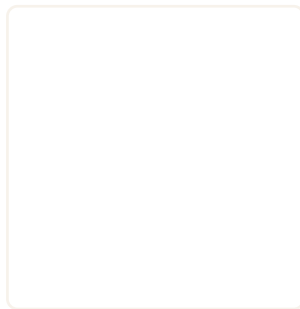
For its 2023 Review the Commission was required to consider the number of registered electors on the 02 March 2020.

Why have you used electoral register data and not population data? Is the number of registered electors reliable?

The Commission is required, by the Act, to work on the basis of the number of the electors on the electoral registers at the 'review date'.

The Commission does not own or collate electoral registers - they are the responsibility of local

authorities. The Act requires the Commission to use the figures published by the ONS and, therefore, the Commission is unable to take account of any alleged under-registration or over-registration of electors that may be claimed in some areas.



What criteria will you apply?

(As per the Act) a Commission may take into account:

- special geographical considerations, including in particular the size, shape and accessibility of a constituency;
- local government boundaries which existed or were prospective on 1 December 2020;
- boundaries of existing constituencies;
- any local ties that would be broken by changes in constituencies; and
- the inconveniences attendant on such changes.

As far as possible, the Commission seeks to create constituencies in Wales:

- From electoral wards that are adjacent to each other; and
- That do not contain ‘detached parts’, i.e. where the only physical connection between one part of the constituency and the remainder would require passage through a different constituency.

How do proposals relate to the Welsh Parliament constituencies?

The Proposals are only applicable to the Westminster Parliamentary constituencies. The PVSC Act 2011 dissolved the link between the two sets of constituencies. Any proposal to create a mechanism to review Welsh Parliament constituencies is a devolved responsibility of the Welsh Parliament.

How do the Proposals relate to the Local Government activity?

The Local Democracy and Boundary Commission for Wales (LDBCW) is a separate entity to the Commission. There is no correlation between the 2023 Review and the work programme of the LDBCW.

Will the changes affect my postcode?

No. The constituency you reside in has no impact on post codes or their allocation.

Will this affect my council tax?

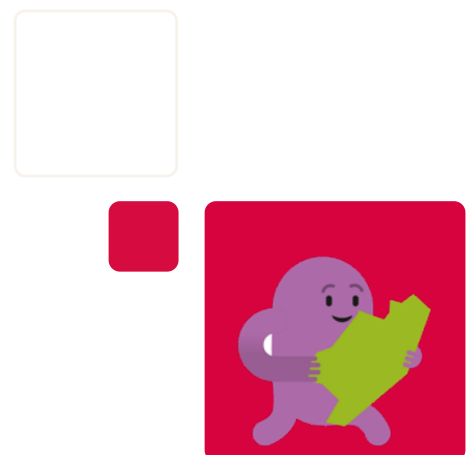
No. The constituency you reside in has no impact on council tax or its allocation. Council tax is set by the relevant local authority.

Will this affect my school catchment area?

No. The constituency you reside in has no impact on school catchment areas. Catchment areas are determined by local authorities or individual schools.

Will this affect my local authority?

No. The constituency you reside in has no impact on the design of local authorities in Wales, or their boundaries. In fact, the boundaries of existing local authorities are a factor the Commission uses in the design of constituencies, where possible.



Will this affect my community/town council?

No. The constituency you reside in has no impact on the design of community or town councils in Wales, or their boundaries. In fact, it is the Commission's policy is not to split any community or town councils as part of this review.

Will this affect my house value?

No. The value of your property is determined by a plethora of factors. There is no evidence that the constituency you reside in has an impact on the value of your property.

Will this affect my health service provision?

No. The constituency you reside in has no impact on health service provision or services.

Will this affect my community amenities?

No. The constituency you reside in has no impact on your community amenities.





**Comisiwn Ffniâu
i Gymru**

**Boundary Commission
for Wales**

The Commission welcomes correspondence, e-mails and telephone calls either in English or Welsh.
To contact the Commission, please write to:

Boundary Commission for Wales
Ground Floor, Hastings House, Fitzalan Court
Cardiff, CF24 0BL

Telephone: +44 (0)29 20464819
Telephone: +44 (0)29 21055521
E-mail: bcw@boundaries.wales