

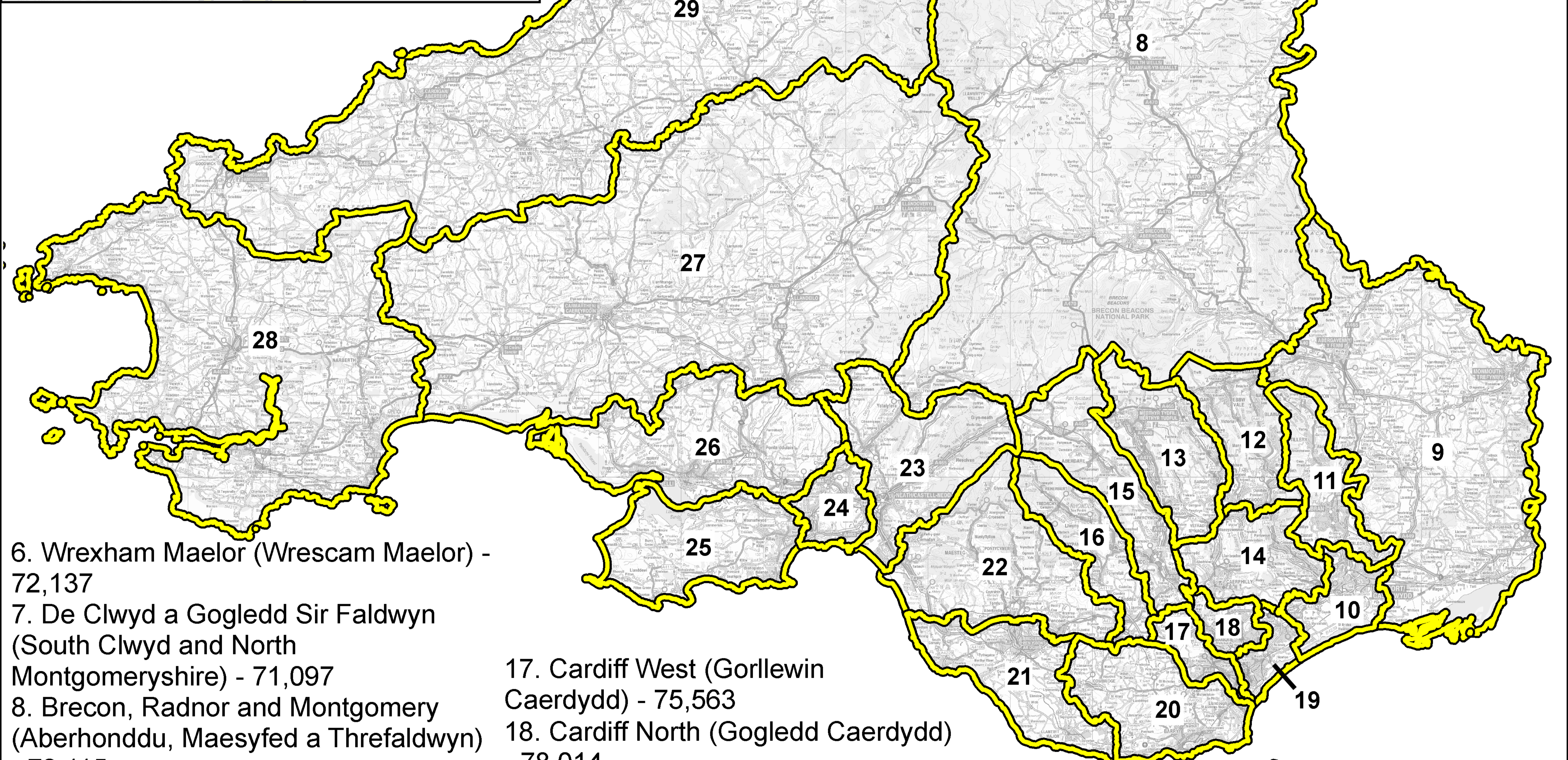
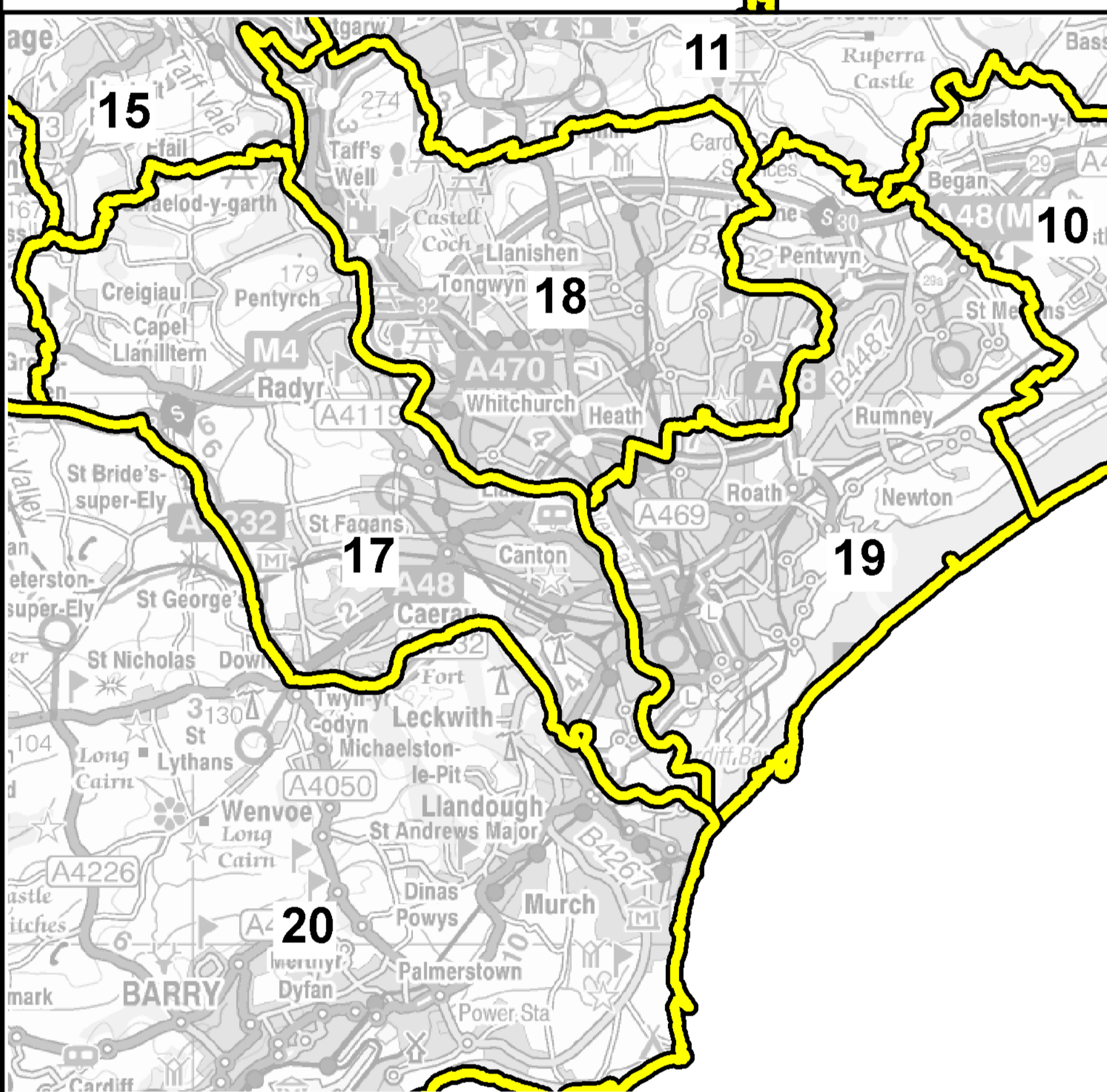
Initial Proposals

1. Ynys Môn ac Arfon (Isle of Anglesey and Arfon) - 77,425
2. Gogledd Clwyd a Gwynedd (North Clwyd and Gwynedd) - 76,147
3. Colwyn and Conwy (Colwyn a Conwy) - 75,035
4. Flint and Rhuddlan (Flint a Rhuddlan) - 75,902
5. Alyn and Deeside (Alyn a Glannau Dyfrdwy) - 76,678



Graddfa / Scale: 1:1,030,000

Cardiff



6. Wrexham Maelor (Wrescam Maelor) - 72,137
7. De Clwyd a Gogledd Sir Faldwyn (South Clwyd and North Montgomeryshire) - 71,097
8. Brecon, Radnor and Montgomery (Aberhonddu, Maesyfed a Threfaldwyn) - 72,115
9. Monmouthshire (Sir Fynwy) - 74,532
10. Newport (Casnewydd) - 75,986
11. Torfaen - 72,367
12. Blaenau Gwent - 75,664
13. Merthyr Tydfil and Rhymney (Merthyr Tudful a Rhymni) - 77,770
14. Caerphilly (Caerffili) - 76,323
15. Cynon Valley and Pontypridd (Cwm Cynon a Phontypridd) - 78,005
16. Rhondda and Llantrisant (Rhondda a Llantrisant) - 74,965

17. Cardiff West (Gorllewin Caerdydd) - 75,563
18. Cardiff North (Gogledd Caerdydd) - 78,014
19. Cardiff South and East (De a Dwyrain Caerdydd) - 77,059
20. Vale of Glamorgan East (Dwyrain Bro Morgannwg) - 76,984
21. Bridgend and Vale of Glamorgan West (Pen-y-bont a Gorllewin Bro Morgannwg) - 73,004
22. Ogmore and Port Talbot (Ogwr a Phort Talbot) - 72,503
23. Neath and Aberavon (Castell-nedd ac Aberafon) - 77,397

24. Swansea East (Dwyrain Abertawe) - 76,514
25. Gower and Swansea West (Gŵyr a Gorllewin Abertawe) - 77,873
26. Llanelli and Lliw (Llanelli a Lliw) - 76,751
27. Caerfyrddin (Carmarthenshire) - 72,569
28. South Pembrokeshire (De Sir Benfro) - 74,070
29. Ceredigion a Gogledd Sir Benfro (Ceredigion and North Pembrokeshire) - 71,392